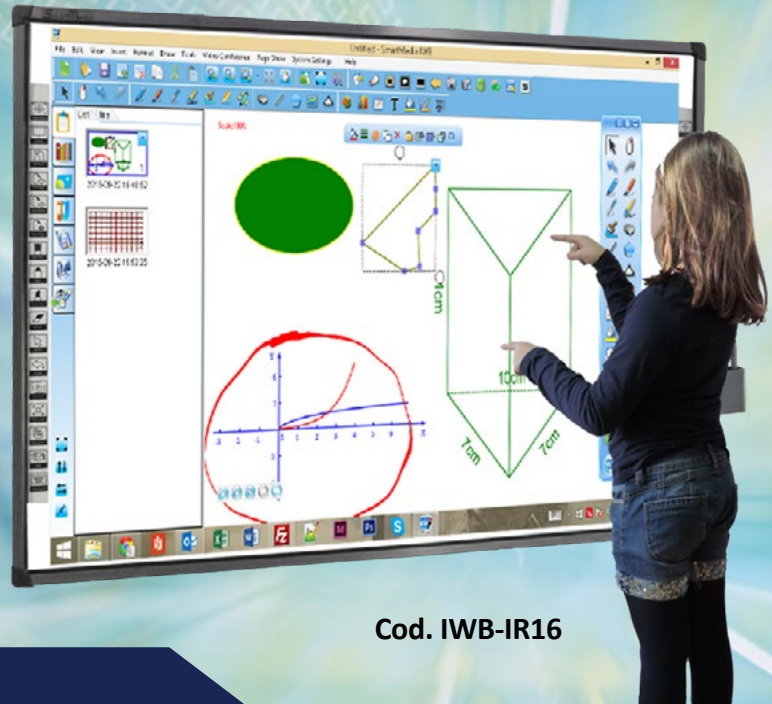


Interactive Whiteboard - 16 touches SmartMedia Multi-Touch Series Infrared

A powerful tool
for interactive learning



Cod. IWB-IR16

Especially Designed for use in classes

WHITEBOARD FEATURES

Infrared technology, multi-touch that allows interaction with both the finger and the pen

- High resolution and precision that allows 16 users to write at the same time
- Anti-reflective erasable surface;
- Equipped with Pen Tray (Pen Tray)
- Connect via USB cable, or optionally optional wireless kit
- Possibility to add two amplified acoustic integrated speakers with 40W RMS or 60W RMS wall



WHY CHOOSE SMARTMEDIA?

- We offer innovative products
- With the best quality and cost effective
- Reliability and variety of solutions
- Excellent service and support

SOFTWARE FEATURES

- Includes all the features to create lessons quickly and easily
- Allows to write down on any application and save it in many formats to easily share them with the whole community of teachers (pdf, .ppt, .doc, .xls, .html, .avi, and all image formats)
- Compatible with Windows XP, Vista, Seven, 8, 8.1, 10, Mac OS
- Import and export the .IWB format to share lessons with other brands
- Integrated videoconference application allows users to share whiteboard pages over the Internet, LAN, or wireless network, annotate and create live sessions that can be discussed remotely, saved and shared

Included Software: SmartMedia IWB

- Check all functions of PC or notebook and the applications
- Design perfect geometric shapes
- Save and print what has been done with the whiteboard
- Write on the applications, create notes, and highlight or enlarge portions of the screen
- Instant connectivity in real-time on camera, webcam, document camera or other digital devices and ability to annotate the video
- Distance Learning: connection in conference mode via Internet or LAN and / or wireless
- Integration with major video conferencing systems
- Support format .IWB common file format (CFF) for interactive whiteboards
- Compatible with most popular operating systems
- Multi-user with customization of the software for single user and password protection
- Automatic update of the new release of the software available
- Find online resources by using a keyword
- Export: image files (.jpg, .jpeg, .bmp, .png, .tif, .tiff, .gif), pdf, power point (.ppt, .pptx), word (.doc, .docx) excel (.xls, .xlsx), web page (.html)

Screen tool with customizable background color or with customized image.

Handwriting recognition and conversion to text (OCR).

Reflector tool, available in various shapes: circle, triangle, rectangle, rhombus, pentagon and star with five points.

Recording of the lesson including interactive voice .avi.

Customizable background.

Import media files: video, flash files, audio and images.

Creating tables, histograms and pie charts.

On-screen keyboard.

Mathematical formula editor
Graphical interface viewable frame, window or full screen modes.

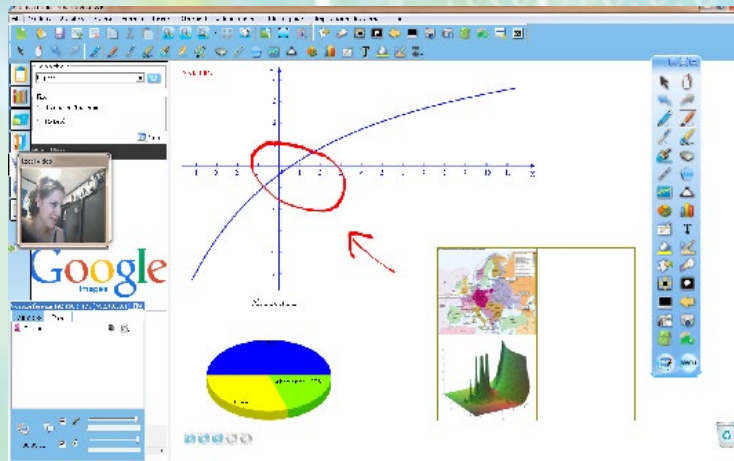


Image capture tool: the ability to import into a project an image of the entire screen to the underlying software, a rectangular region or an irregular region.

Tool Timer / Clock: you can time the lesson or an exercise, start a countdown or display the current time.

Geometry tools: bracket 30° 45°, ruler, protractor and compass, measuring the sides and angles.

Types of pens: pencil, standard pen, brush, Bamboo pen, highlighter, pen texture, smart pen (for shape recognition) and magic pen (for recognition tool).

Creation of multiple files with ability to switch from one file to another without losing the work you created earlier.

Split screen in two defined areas (teacher and student) with ability to use simultaneously different functions.

Voting system: creation and visualization of tests and quizzes for systems responders.

Geometric shapes in 3D. Multimedia gallery with over 10,000 resources (learning objects) to simplify the creation of classes.

Preview the slides created.

Video converter to avi, swf, wmv, flv and swf to exe. Video convertidor a avi swf, wmv, flv y swf a exe.

Technical Specification

MODEL	IWB-IR16
Size	87"
Display dimensions	1802 x 1300 x 33 mm
Technology	Infrared
Writing method	Pen or finger
Sensitive Area	83"
Projection Area	83"
Aspect Ratio	4:3
Touch Resolution	38000 x 38000
Touch Points	10
Resolution by Inches	More than 200 lines
Tracking speed	57600 bps
Scan speed	< 8ms
Processing Speed	500 acquisitions per second
Energy consumption	< 2W
Connection	USB or Wi-Fi optional
Driver Compatibility	Win2000/2003/XP/Vista/Win 7/8/8.1 & 10, Mac OS, Linux
Type Pen	Without Battery
Frame	Aluminium
Surface	Erasable Steel
Weight	20 Kg
Warranty	3 years renewable for 5 years after registration on the site
Included Accessories	2 Pens - Pen Tray (wall tray) - wall bracket - USB cable - User Manual - SmartMedia IWB software for slate usage control
Function keys	Optional



Cl@ss Kit 2.0 SmartMedia:

- Wifi connection
- Interactive Whiteboard + LIM software
- Video projector
- Teacher
- Student devices (Tablet PC, Smartphone)
- Didactic network SmartMedia Pro for the Sharing in each environment

Accessories

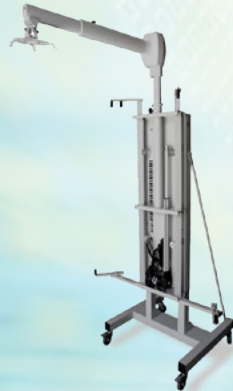
Mounting Options



- **Wall Mount for Interactive Whiteboards**
 SPRE - height-adjustable by an electric motor with a remote control system and safety switch
 SPRP - height-adjustable by a manual gas spring system
 Both options available with an extension arm for a short-throw projector or with a support bracket for an ultra short-throw projector.

- **Mobile Stand for Interactive Whiteboards**

- SRE - height-adjustable by an electric motor with a remote control and safety switch
- SRP - height-adjustable by a manual gas spring system
- Both options available with an extension arm for a short-throw projector or with a support bracket for an ultra short-throw projector

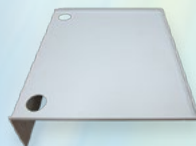


- **SBQ-UN** - Universal stand for interactive whiteboards with wheels

- **Laptop Security locker (ASN/ASN-P/ASN-SRE)** for notebooks with 10" to 19" displays.



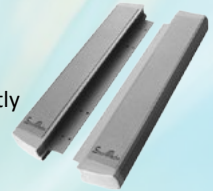
- **Laptop shelf (MESRE)**
 Support for a PC / Notebook, compatible with SRE and SRP



Accessories

- **One Pair Amplified Speakers (IWB-40W)**

2 x 20 watt RMS speakers mount directly to the whiteboard frame



- **Wireless Connection Device (SKQW-UN)**

Wirelessly connect from whiteboard USB to Wi-Fi 802.11b/g/n, it includes 1 LAN and 2 USB ports



- **Wireless Interactive Tablet (STW)**
 The wireless tablet allows the teacher to interact with the PC moving freely in the classroom.



- **Cod. IWB-PT** Tray with eraser and markers, 8 buttons for different functions.

- **DOCUMENT CAMERA AND VISUAL PRESENTER**

Allows you to capture any image or object from a work surface, maintaining high image quality in a portable system and reduced weight



- **Voting systems for testing and processing results with statistics and graphics with or without screen.**
 Available Kit of 12, 24 or 32 radiofrequency transponders

* Product images are only indicative and may change at any time without prior notice.